



The SafetyLink FastFit Davit is a Temporary Anchor suitable for use as part of a personal fall protection system. The FastFit Davit is suitable for having one user suspended from the shuttle and a second user connected to either of the secondary attachment points (Mast or Base).

FALL PROTECTION RATING

The FastFit Davit is rated for one user with a maximum weight of 150kg suspended from the shuttle and one user connected to either of the secondary attachment points.

MATERIALS HANDLING

The Davit may be used to lift materials. Davits used for material lifting purposes shall not be used for supporting a user, *see manual for maximum loads allowed on Davit Booms*.

STANDARDS

The FastFit Davit Temporary Anchor System is compliant with AS/NZS 5532 and EN795.

All safety procedures must comply in accordance with the current safety code(s) of practice(s) for working at heights. Ensure safety at all times during and after installation by using an appropriate height safety system.

Boom 1600mm

Mast 2200mm



PRODUCT CODE: DAVIT_KIT22.16

Product Parts	Description	Qty	Material
DAVIT_MAST22	2200mm Mast	1	Aluminium/Stainless Steel/Gal Steel
DAVIT_BOOM16	1600mm Boom	1	Aluminium/Stainless Steel/Gal Steel
DAVIT_BRACE22	2.2m Mast Brace	1	Aluminium



SCAN ME
Davit Manual



SCAN ME
Website



SCAN ME
Catalogue



SCAN ME
Safety Centre
Training

© 2018, SafetyLink Pty Ltd, Australia.

Patents: SafetyLink Pty Ltd has a multitude of patents, patents pending, design applications, trademarks and copyrighted documents both lodged and issued. Should you wish to know the progress of our intellectual property on a specific product please email us on ip@safetylink.com and quote the product code.

Doc ID: MKT-1261 Version: 4.0



PRODUCT CODE: DAVIT_BASE01

Davit Base – Fixed Floor Mount

- ▲ Davit Base to be secured with Anchor Rods, Cast-In Cage or Steel Fixings.
- ▲ Material: Galvanised Steel
- ▲ Weight: 24.5kg



PRODUCT CODE: DAVIT_BASE02

Davit Base – Concealed Fixed Floor Mount with Removable Sleeve Floor Mount

- ▲ Davit Base to be secured with Anchor Rods, Cast-In Cage or Steel Fixings.
- ▲ Material: Galvanised Steel
- ▲ Weight: 32kg



SCAN ME
Davit Manual



SCAN ME
Website



SCAN ME
Catalogue



SCAN ME
Safety Centre
Training



PRODUCT CODE: DAVIT_BASE02.01

Davit Base – Concealed Fixed Floor Mount

- ▲ Davit Base to be secured with Anchor Rods, Cast-In Cage or Steel Fixings.
- ▲ One (1) base required for each abseil location.
- ▲ Material: Galvanised Steel
- ▲ Weight: 15.7kg



PRODUCT CODE: DAVIT_BASE02.02

Davit Base - Removable Sleeve Floor Mount

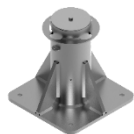
- ▲ One (1) base required for each davit arm.
- ▲ Material: Galvanised Steel
- ▲ Weight: 16.3kg

© 2018, SafetyLink Pty Ltd, Australia.

Patents: SafetyLink Pty Ltd has a multitude of patents, patents pending, design applications, trademarks and copyrighted documents both lodged and issued. Should you wish to know the progress of our intellectual property on a specific product please email us on ip@safetylink.com and quote the product code.

Doc ID: MKT-1261 Version: 4.0

FASTFIT DAVIT COMPONENTS – Raised Floor Mounted Bases



PRODUCT CODE: DAVIT_BASE07.400

Davit Base – Raised Fixed Floor Mount – 400mm

- ▲ Davit Base to be secured with Anchor Rods, Cast-In Cage or Steel Fixings.
- ▲ Material: Galvanised Steel
- ▲ Weight: 41.2kg



PRODUCT CODE: DAVIT_BASE07.600

Davit Base – Raised Fixed Floor Mount – 600mm

- ▲ Davit Base to be secured with Anchor Rods, Cast-In Cage or Steel Fixings.
- ▲ Material: Galvanised Steel
- ▲ Weight: 46.7kg



PRODUCT CODE: DAVIT_BASE07.800

Davit Base – Raised Fixed Floor Mount – 800mm

- ▲ Davit Base to be secured with Anchor Rods, Cast-In Cage or Steel Fixings.
- ▲ Material: Galvanised Steel
- ▲ Weight: 52.3kg



PRODUCT CODE: DAVIT_BASE07.1000

Davit Base – Raised Fixed Floor Mount – 1000mm

- ▲ Davit Base to be secured with Anchor Rods, Cast-In Cage or Steel Fixings.
- ▲ Material: Galvanised Steel
- ▲ Weight: 57.8kg



PRODUCT CODE: DAVIT_BASE07.PROOF

- ▲ Planter Base Proof Loading Kit
- ▲ Material: PVC
- ▲ Weight: 2.35kg



PRODUCT CODE: DAVIT_BASE07.TOOL

- ▲ Planter Base Proof Loading Tool
- ▲ Material: Steel
- ▲ Weight: 1.76kg



Davit Manual



Website



Catalogue



Safety Centre
Training

© 2018, SafetyLink Pty Ltd, Australia.

Patents: SafetyLink Pty Ltd has a multitude of patents, patents pending, design applications, trademarks and copyrighted documents both lodged and issued. Should you wish to know the progress of our intellectual property on a specific product please email us on ip@safetylink.com and quote the product code.

Doc ID: MKT-1261 Version: 4.0



PRODUCT CODE: DAVIT_BASE04

Davit Base - Fixed Wall Mount

- ▲ Davit Base to be secured with Anchor Rods, Cast-In Cage or Steel Fixings.
- ▲ Standard Concrete Install: suitable for DAVIT_BOOM10 and DAVIT_BOOM16.
- ▲ Standard Steel Install: suitable for DAVIT_BOOM10, DAVIT_BOOM16 and DAVIT_BOOM22.
- ▲ Material: Galvanised Steel
- ▲ Weight: 34.74kg

PRODUCT CODE: DAVIT_BASE04.01

Davit Base - Concealed Fixed Wall Mount

- ▲ Davit Base to be secured to wall with Anchor Rods, Cast-In Cage or Steel Fixings, use with removable sleeve - DAVIT_BASE04.02.
- ▲ One (1) base required for each abseil location.
- ▲ Standard Concrete Install: suitable for DAVIT_BOOM10 and DAVIT_BOOM16.
- ▲ Standard Steel Install: suitable for DAVIT_BOOM10, DAVIT_BOOM16 and DAVIT_BOOM22. Material: Galvanised Steel
- ▲ Weight: 13.7kg



Davit Manual



Website



Catalogue



Safety Centre
Training



PRODUCT CODE: DAVIT_BASE04.02

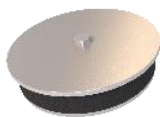
Davit Base - Removable Sleeve Wall Mounted

- ▲ Use with fixed base - DAVIT_BASE04.01.
- ▲ One (1) base required for each davit arm.
- ▲ Standard Concrete Install: suitable for DAVIT_BOOM10 and DAVIT_BOOM16.
- ▲ Standard Steel Install: suitable for DAVIT_BOOM10, DAVIT_BOOM16 and DAVIT_BOOM22.
- ▲ Material: Galvanised Steel
- ▲ Weight: 21.04kg

© 2018, SafetyLink Pty Ltd, Australia.

Patents: SafetyLink Pty Ltd has a multitude of patents, patents pending, design applications, trademarks and copyrighted documents both lodged and issued. Should you wish to know the progress of our intellectual property on a specific product please email us on ip@safetylink.com and quote the product code.

Doc ID: MKT-1261 Version: 4.0



PRODUCT CODE: DAVIT_BASE.CAP

- ▲ Davit Caps used to cap off base when not in use.
- ▲ Material: Stainless steel, EPDM
- ▲ Weight: 1.66kg



PRODUCT CODE: DAVIT_BASE.SLEEVE

- ▲ Davit Sleeve, used inside davit bases.
- ▲ Material: PVC
- ▲ Weight: 0.5kg



PRODUCT CODE: DAVIT_BASE05

- ▲ Concrete Cast-In Cage for installation prior to pouring concrete.
- ▲ Material: Mild Steel
- ▲ Weight: 2.14kg



PRODUCT CODE: DAVIT_BASE05-SS

- ▲ Concrete Cast-In Cage for installation prior to pouring concrete.
- ▲ Material: Stainless Steel
- ▲ Weight: 4.07kg



PRODUCT CODE: CON-M16X200-DONUT

- ▲ Retro Concrete Fixing
- ▲ Material: Stainless Steel, Nylon
- ▲ Weight: 0.32kg



PRODUCT CODE: CONCL013

- ▲ Retro Concrete Fixing with Brass Cap
- ▲ Material: Stainless Steel
- ▲ Weight: 0.57kg



SCAN ME
Davit Manual



SCAN ME
Website



SCAN ME
Catalogue



SCAN ME
Safety Centre
Training

© 2018, SafetyLink Pty Ltd, Australia.

Patents: SafetyLink Pty Ltd has a multitude of patents, patents pending, design applications, trademarks and copyrighted documents both lodged and issued. Should you wish to know the progress of our intellectual property on a specific product please email us on ip@safetylink.com and quote the product code.

Doc ID: MKT-1261 Version: 4.0