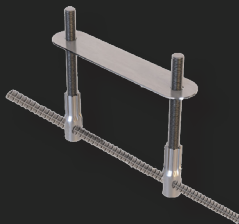
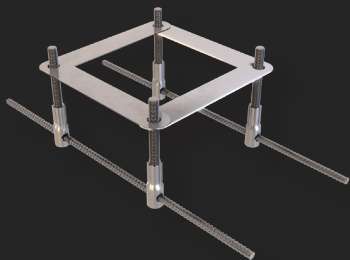
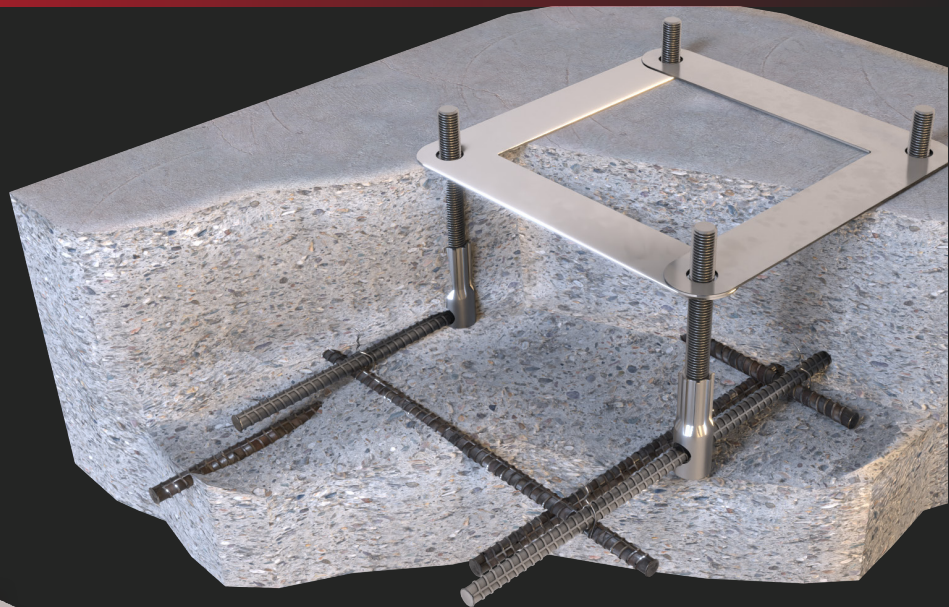




**SafetyLink®**

*Innovative  
Fall Protection*





## SafetyLink's Cast In Cage







SafetyLink's Cast In Cages enable your height safety system to be installed from the start of construction.

SafetyLink's ConcreteLink Cast In Cages are concrete studs set at the correct spacing for different products. The cages are to be installed prior to the concrete being poured.

Cast In Cages save time and money by eliminating the need for pull testing during installation or re-certification.

-  Galvanised or 316 Stainless Steel options.
-  For use with SafetyLink Tuff Posts, X-Rail System and Davit System.

SafetyLink will provide you with the following:

-  All products tested and manufactured to the current Standards.
-  All distributors and installers are trained to use SafetyLink products.
-  Supply installation guides, testing results and product sheets.
-  Layout Design Service providing compliant roof safety systems.
-  Supply a large range of roof anchors that protect you from the ground up, allowing complete access to your roof.
-  Installers are qualified to do yearly inspections on your anchors as per the current Standards.

***'Innovative  
Fall Protection'***



**SafetyLink®**  
*Innovative  
Fall Protection*

**SafetyLink Pty Ltd 1300 789 545**

+61 2 4964 1068 [info@safetylink.com](mailto:info@safetylink.com)



For further information and to order our products visit our website.

[www.safetylink.com](http://www.safetylink.com)