



SCAN ME

www.safetylink.com



SCAN ME

Catalogue



SCAN ME

Chemical Adhesive  
Data Sheet



SCAN ME

Install Video



SCAN ME

Safety Centre  
Training

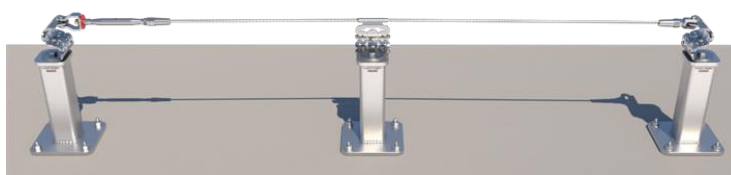
DATA SHEET



FS 707792

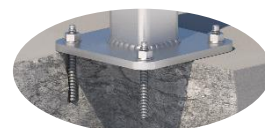
# CLASSIC TUFF-POST





FrogLine 300mm TUFF-POST (Square) Concrete Mounted



- TUFF-POST is designed to raise the height of a Frogline Lifeline system 300mm.
- TUFF-POST is made entirely from 316 stainless steel.
- Designed to be submerged into garden beds, water and other mediums.
- Designed to be **anchored into concrete** (steel bolted version available).

The building or structure for the anchorages must be assessed by an engineer, unless it is clear to a competent height safety installer that the structure is adequate. Refer to system information for site specific use.



PRODUCT COMPONENTS	DESCRIPTION	MATERIAL	QTY	ANCHOR
TUFF POST END ANCHOR – PRODUCT CODE: STAT.FROGTUFF002C-300				
FROGLINE END	FrogLine Base End	316SS	1	
BOLT-M16x50mm-SS	Bolt: M16x50mm Set Screw	316SS	1	
WASHER M16_SPRING	Spring Washer: M16	316SS	1	
WASHER M16_DONUT	Washer: DonutLink M16	316SS	1	
TUFF-POST300	TUFF-POST 300mm (Square)	316SS	1	
CON-M12x160	Anchor Rod M12X160, Nut, Spring Washer, Washer	316SS	4	
TUFF POST INTERMEDIATE ANCHOR – PRODUCT CODE: STAT.FROGTUFF001C-300				
FROGLINE INT	FrogLine Base Intermediate	316SS	1	
BOLT-M16x50mm-SS	Bolt: M16x50mm Set Screw	316SS	1	
WASHER M16_SPRING	Spring Washer: M16	316SS	1	
WASHER M16_DONUT	Washer: DonutLink M16	316SS	1	
TUFF-POST300	TUFF-POST 300mm (Square)	316SS	1	
CON-M12x160	Anchor Rod M12X160, Nut, Spring Washer, Washer	316SS	4	
TUFF POST INTERMEDIATE EXT ANCHOR – PRODUCT CODE: STAT.FROGTUFF008C-300				
FROGLINE INT_EXT	FrogLine Base Intermediate Extended	316SS	1	
BOLT-M16x50mm-SS	Bolt: M16x50mm Set Screw	316SS	1	
WASHER M16_SPRING	Spring Washer: M16	316SS	1	
WASHER M16_DONUT	Washer: DonutLink M16	316SS	1	
TUFF-POST300	TUFF-POST 300mm (Square)	316SS	1	
CON-M12x160	Anchor Rod M12X160, Nut, Spring Washer, Washer	316SS	4	
TUFF POST CORNER ANCHOR – PRODUCT CODE: STAT.FROGTUFF003C-300				
FROGLINE CNR	FrogLine Base Corner	316SS	1	
BOLT-M16x50mm-SS	Bolt: M16x50mm Set Screw	316SS	1	
WASHER M16_SPRING	Spring Washer: M16	316SS	1	
WASHER M16_DONUT	Washer: DonutLink M16	316SS	1	
TUFF-POST300	TUFF-POST 300mm (Square)	316SS	1	
CON-M12x160	Anchor Rod M12X160, Nut, Spring Washer, Washer	316SS	4	

#### Rated 15kN one person anchor

1. To comply with Australian/European Standards each TUFF-POST unit must be tested after installation.
2. Test consists of ultimate pull out force proof loading to 50% (7.5kN) of design purpose (15kN) of anchorage.
3. Allow sufficient time for curing before testing, see instructions on fastener container.
4. Recommended chemical anchor: Fischer FIS-V as per Fischer Product Supplement Data sheets.

All products must be installed in accordance with SafetyLink's installation handbook, using only products supplied by SafetyLink Pty Ltd.



© 2018, SafetyLink Pty Ltd, Australia.

Patents: SafetyLink Pty Ltd has a multitude of patents, patents pending, design applications, trademarks and copyrighted documents both lodged and issued. Should you wish to know the progress of our intellectual property on a specific product please email us on [ip@safetylink.com](mailto:ip@safetylink.com) and quote the product code.

Doc ID: MKT-596 Version: 5.0

Asia-Pacific/The Americas  
[info@safetylink.com](mailto:info@safetylink.com)

Europe/Africa/Middle East  
[europa.sales@safetylink.com](mailto:europa.sales@safetylink.com)

Northern Europe  
[uk.sales@safetylink.com](mailto:uk.sales@safetylink.com)