



SCAN ME
Terms and
Conditions



SCAN ME
Catalogue



SCAN ME
Installation
Handbook



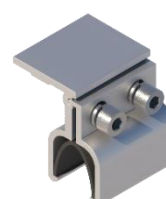
KALZIP ROOF CLAMP
PRODUCT CODE: CLAMP.KALZ



KLIPLOK 406 ROOF CLAMP
PRODUCT CODE: CLAMP.KL406



STANDING SEAM ROOF CLAMP
PRODUCT CODE: CLAMP.SS



KLIPLOK 700 ROOF CLAMP
PRODUCT CODE: CLAMP.KL700

- Clamps for installation Walkway and Guardrail to Standing Seam roof profiles.
- FastFit walkways are manufactured to AS 1657:2018 Standards.

ORDER CODE: GUARDXXX + CLAMPXXX + SCREWS

Kit Code	Kit Description	Clamps with 20mm Screws Required
GUARDK211	2m roof mount guardrail only - kit	4
GUARDK192	Fold down guardrail surface mount - 2 metres	4
GUARDK193	Fold down guardrail surface mount - 3 metres	6
GUARDK194	Fold down guardrail surface mount - 4 metres	6
GUARDK141	Roof mount guardrail only - starting kit	8
GUARDK142	Roof mount guardrail only - repeating kit	6
GUARDK111	Levelled walkway only - starting kit	22
GUARDK112	Levelled walkway only - repeating kit	20
GUARDK101	Flat walkway only - starting kit	22
GUARDK102	Flat walkway only - repeating kit	20
GUARDK161	Single guardrail with levelled walkway - starting kit	20
GUARDK162	Single guardrail with levelled walkway - repeating kit	18
GUARDK151	Single guardrail with walkway - starting kit	20
GUARDK152	Single guardrail with walkway - repeating kit	18
GUARDK181	Double guardrail with levelled walkway - starting kit	24
GUARDK182	Double guardrail with levelled walkway - repeating kit	21
GUARDK171	Double guardrail with walkway - starting kit	24
GUARDK172	Double guardrail with walkway - repeating kit	21

© 2018, SafetyLink Pty Ltd, Australia.

Patents: SafetyLink Pty Ltd has a multitude of patents, patents pending, design applications, trademarks and copyrighted documents both lodged and issued. Should you wish to know the progress of our intellectual property on a specific product please email us on ip@safetylink.com and quote the product code.

Doc ID: MKT-1207 Version: 1.0