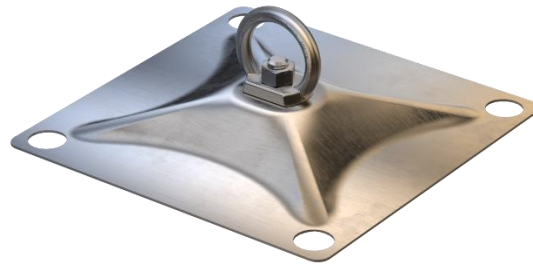


SURFACELINK

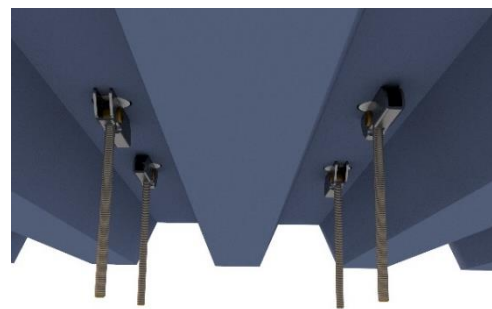
Surface Mounted Anchor for Membrane Roof Profile



- Multi-directional fall protection.
- Specifically for use with permanent height safety systems, to be mounted on the surface of membrane roofing.
- Can be used for rope access (abseiling).
- The building or structure for the anchorages must be assessed by an engineer, unless it is clear to a competent person that the structure is adequate.

STANDARDS

Complies with AS/NZS 1891.4 and AS/NZS 5532:2013.



COMPLETE UNIT - PRODUCT CODE: SURFSQ002

| Product Parts | Description | Qty | Material |
|-------------------------|---|-----|---------------|
| EYEHOOK M16 | Eyehook M16 no thread | 1 | 316 SS |
| NUT M16 | Nut: 16mm | 1 | 316 SS |
| WASHER 70od-SS | Washer: 70mm O.D. | 1 | 316 SS |
| ADV-PLATE-SS-295SQ-Bolt | SurfaceLink Plate: 295mmx295mm (welded M16x35 Set Screw+70od Washer) | 1 | 316 SS |
| TOGGLE001 | Toggle Anchor 300mm with PVC Pipe and Foam | 4 | PVC Pipe/Foam |

All products must be installed in accordance with SafetyLink's installation handbook, using only products supplied by SafetyLink Pty Ltd.



© 2018, SafetyLink Pty Ltd, Australia.

Patents: SafetyLink Pty Ltd has a multitude of patents, patents pending, design applications, trademarks and copyrighted documents both lodged and issued. Should you wish to know the progress of our intellectual property on a specific product please email us on ip@safetylink.com and quote the product code.

Doc ID: MKT-1129 Version: 4.0

Asia-Pacific/The Americas
info@safetylink.com

Europe/Africa/Middle East
europa.sales@safetylink.com

Northern Europe
uk.sales@safetylink.com



SCAN ME

www.safetylink.com



SCAN ME

Catalogue



SCAN ME

Anchor Layout
Video

DATA SHEET



FS 707792