



- ▲ Ladderhead Top Entry Walkway Platform Kit.
- ▲ Available in two sizes - 2400mm and 3000mm.
- ▲ Suitable for roof pitches 0 to 3 degrees only.
- ▲ Heavy gauge aluminium for superior strength.
- ▲ FastFit ladder system is designed for single person use and rated for maximum 150kg.
- ▲ FastFit ladders are manufactured to AS 1657:2018 Standards.



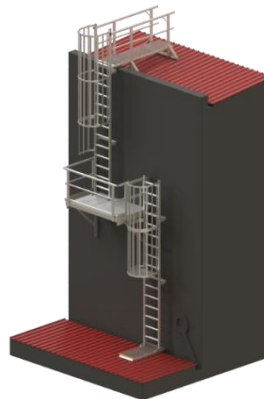
COMPLETE UNIT - PRODUCT CODE: LADER002.PLT.WW.2400

Product Code	Description	Material	Qty
LADER002.PLT.WW.2400.01	Ladderhead Top Entry Walkway Platform Kit 2400mm	Aluminium	1
SCREW 12-14x20mm	Screw: 12-14x20mm Self Tapping	Galvanised	56
SCREW 12-14x35mm	Screw: 12-14x35mm Self Tapping	Galvanised	10
SCREW 12-14x50mm	Screw: 12-14x50mm Self Tapping	Galvanised	8
AL_GRATING DISC	Walkway Grating Washer	Aluminium	10
RIVET_5x22mm	Rivet: 5 x 22mm	Aluminium	14
FOAM-TAPE-SQUARE	Foam Tape: 40x40x1.6mm	EPDM	14

COMPLETE UNIT - PRODUCT CODE: LADER002.PLT.WW.3000

Product Code	Description	Material	Qty
LADER002.PLT.WW.3000.01	Ladderhead Top Entry Walkway Platform Kit 3000mm	Aluminium	1
SCREW 12-14x20mm	Screw: 12-14x20mm Self Tapping	Galvanised	56
SCREW 12-14x35mm	Screw: 12-14x35mm Self Tapping	Galvanised	10
SCREW 12-14x50mm	Screw: 12-14x50mm Self Tapping	Galvanised	8
AL_GRATING DISC	Walkway Grating Washer	Aluminium	10
RIVET_5x22mm	Rivet: 5 x 22mm	Aluminium	14
FOAM-TAPE-SQUARE	Foam Tape: 40x40x1.6mm	EPDM	14

Ladder Example: LADERK002.172



A FALL RESCUE PLAN SHOULD BE DEVELOPED PRIOR TO USING SAFETYLINK EQUIPMENT

© 2018, SafetyLink Pty Ltd, Australia.

Patents: SafetyLink Pty Ltd has a multitude of patents, patents pending, design applications, trademarks and copyrighted documents both lodged and issued. Should you wish to know the progress of our intellectual property on a specific product please email us on ip@safetylink.com and quote the product code.

Doc ID: MKT-1084 Version: 3.0



SCAN ME
Manual



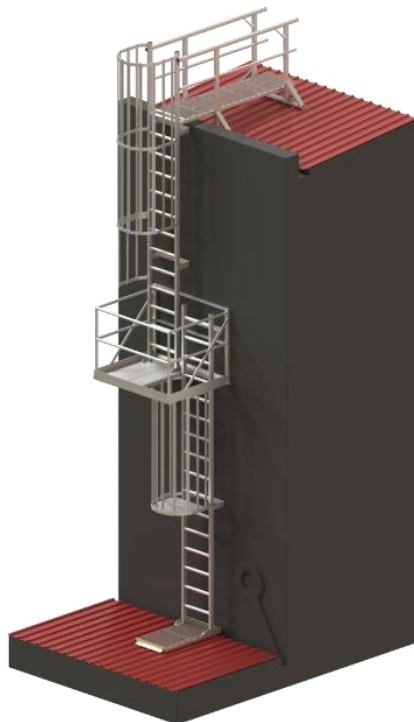
SCAN ME
Website



SCAN ME
Catalogue



SCAN ME
Safety Centre
Training



SCAN ME
Manual



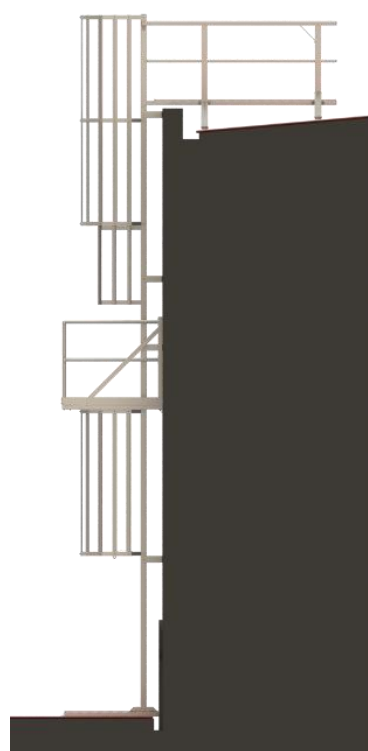
SCAN ME
Website



SCAN ME
Catalogue



SCAN ME
Safety Centre
Training



A FALL RESCUE PLAN SHOULD BE DEVELOPED PRIOR TO USING SAFETYLINK EQUIPMENT

© 2018, SafetyLink Pty Ltd, Australia.

Patents: SafetyLink Pty Ltd has a multitude of patents, patents pending, design applications, trademarks and copyrighted documents both lodged and issued. Should you wish to know the progress of our intellectual property on a specific product please email us on ip@safetylink.com and quote the product code.

Doc ID: MKT-1084 Version: 3.0