





# TUFF-POST

## FrogLine 600mm (Round) TUFF-POST Concrete Mounted

- TUFF-POST is designed to raise the height of a Frogline Lifeline system 600mm.
- Designed to be submerged into garden beds, water and other mediums.
- Designed to be **anchored into concrete** (steel bolted version available).



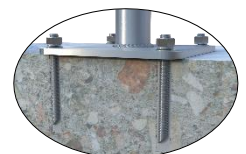
The building or structure for the anchorages must be assessed by an engineer, unless it is clear to a competent height safety installer that the structure is adequate. Refer to system information for site specific use.

PRODUCT COMPONENTS		DESCRIPTION	MATERIAL	QTY	ANCHOR
TUFF POST END ANCHOR – PRODUCT CODE: STAT.FROGTUFF002C-600R					
FROGLINE END	FrogLine Base End		316SS	1	
BOLT-M16x50mm-SS	Bolt: M16x50mm Set Screw		316SS	1	
WASHER M16_SPRING	Spring Washer: M16		316SS	1	
WASHER M16_DONUT	Washer: DonutLink M16		316SS	1	
TUFF-POST600R	TUFF-POST 600mm (Round)		316SS	1	
CON-M16x160	Anchor Rod M16x160, Nut, Spring Washer & Washer		316SS	4	
TUFF POST INTERMEDIATE ANCHOR – PRODUCT CODE: STAT.FROGTUFF001C-600R					
FROGLINE INT	FrogLine Base Intermediate		316SS	1	
BOLT-M16x50mm-SS	Bolt: M16x50mm Set Screw		316SS	1	
WASHER M16_SPRING	Spring Washer: M16		316SS	1	
WASHER M16_DONUT	Washer: DonutLink M16		316SS	1	
TUFF-POST600R	TUFF-POST 600mm (Round)		316SS	1	
CON-M16x160	Anchor Rod M16x160, Nut, Spring Washer & Washer		316SS	4	
TUFF POST INTERMEDIATE EXT ANCHOR – PRODUCT CODE: STAT.FROGTUFF008C-600R					
FROGLINE INT_EXT	FrogLine Base Intermediate Extended		316SS	1	
BOLT-M16x50mm-SS	Bolt: M16x50mm Set Screw		316SS	1	
WASHER M16_SPRING	Spring Washer: M16		316SS	1	
WASHER M16_DONUT	Washer: DonutLink M16		316SS	1	
TUFF-POST600R	TUFF-POST 600mm (Round)		316SS	1	
CON-M16x160	Anchor Rod M16x160, Nut, Spring Washer & Washer		316SS	4	
TUFF POST CORNER ANCHOR – PRODUCT CODE: STAT.FROGTUFF003C-600R					
FROGLINE CNR	FrogLine Base Corner		316SS	1	
BOLT-M16x50mm-SS	Bolt: M16x50mm Set Screw		316SS	1	
WASHER M16_SPRING	Spring Washer: M16		316SS	1	
WASHER M16_DONUT	Washer: DonutLink M16		316SS	1	
TUFF-POST600R	TUFF-POST 600mm (Round)		316SS	1	
CON-M16x160	Anchor Rod M16x160, Nut, Spring Washer & Washer		316SS	4	

### Rated 15kN one person anchor

- To comply with Australian/European Standards each TUFF-POST unit must be tested after installation.
- Test consists of ultimate pull out force proof loading to 50% (7.5kN) of design purpose (15kN) of anchorage.
- Allow sufficient time for curing before testing, see instructions on fastener container.
- Recommended chemical anchor: Fischer FIS-V as per Fischer Product Supplement Data sheets.

All products must be installed in accordance with SafetyLink's installation handbook, using only products supplied by SafetyLink Pty Ltd.



© 2018, SafetyLink Pty Ltd, Australia.

**Patents:** SafetyLink Pty Ltd has a multitude of patents, patents pending, design applications, trademarks and copyrighted documents both lodged and issued. Should you wish to know the progress of our intellectual property on a specific product please email us on [ip@safetylink.com](mailto:ip@safetylink.com) and quote the product code.

Doc ID: MKT-626 Version: 4.0

Asia-Pacific/The Americas  
[info@safetylink.com](mailto:info@safetylink.com)

Europe/Africa/Middle East  
[europa.sales@safetylink.com](mailto:europa.sales@safetylink.com)

Northern Europe  
[uk.sales@safetylink.com](mailto:uk.sales@safetylink.com)



SCAN ME  
FrogLine  
In Use



SCAN ME  
Terms and  
Conditions



SCAN ME  
Catalogue



Chemical Adhesive  
Data Sheet



SCAN ME  
Installation  
Handbook

# DATA SHEET



FS 707792