



SCAN ME

www.safetylink.com



SCAN ME

Catalogue



SCAN ME

Install Video



SCAN ME

Safety Centre
Training

DATA SHEET



FS 707792

FROGLINE LIFELINE

Retro Anchor Extension



- Specifically for use with permanent horizontal height safety lifeline systems.
- The extender creates extra height when required.
- Suits roof pitches up to 25 degrees.
- Constructed entirely of 316 stainless steel.

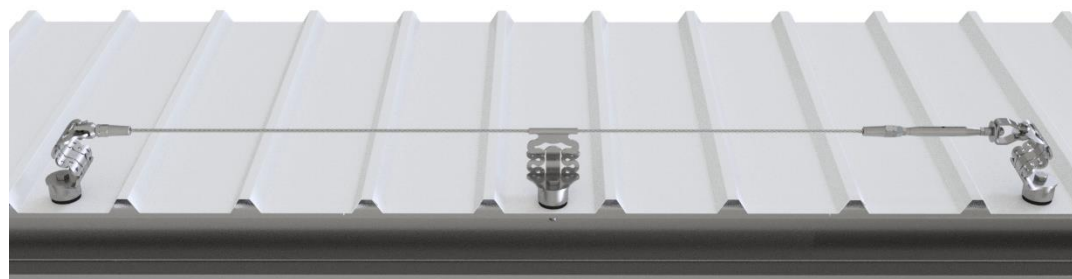
The building or structure for the anchorages must be assessed by an engineer, unless it is clear to a competent height safety installer that the structure is adequate.

- ⚠ **MAXIMUM USER PER SYSTEM IS FOUR (4).**
- ⚠ **MAXIMUM USER PER SPAN IS TWO (2).**
- ⚠ **REFER TO SYSTEM INFORMATION FOR SITE SPECIFIC USE.**

FROGLINE EXTENSIONS		QTY	WEIGHT g
ORDER CODE: STAT.FROGRET001.01	Extension: 63.5OD x 35mm 316SS	1	.814
ORDER CODE: STAT.FROGRET001.02	Extension: 63.5OD x 55mm 316SS	1	1.276
ORDER CODE: STAT.FROGRET001.03	Extension: 63.5OD x 90mm 316SS	1	2.204

Note: Bolts to be purchased separately.

RETRO LIFELINE INSTALLED



All products must be installed in accordance with SafetyLink's installation handbook, using only products supplied by SafetyLink Pty Ltd.

© 2018, SafetyLink Pty Ltd, Australia.

Patents: SafetyLink Pty Ltd has a multitude of patents, patents pending, design applications, trademarks and copyrighted documents both lodged and issued. Should you wish to know the progress of our intellectual property on a specific product please email us on ip@safetylink.com and quote the product code.

Doc ID: MKT-395 Version: 8.0

Asia-Pacific/The Americas
info@safetylink.com

Europe/Africa/Middle East
europe.sales@safetylink.com

Northern Europe
uk.sales@safetylink.com