

Safety*Link*

CATALOGUE

2024



Fast*Fit*
—— **Davit**



Contents

Davit - Installation



Davit - Catalogue



Davit - Website



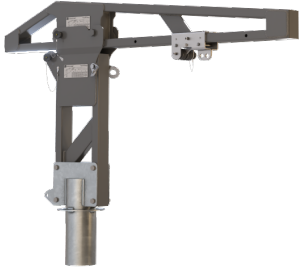
Fast*Fit*

--- Davit

Davit Kit - Mast 1000mm / Boom 1000mm	4
Davit Kit - Mast 1000mm / Boom 1600mm	4
Davit Kit - Mast 1000mm / Boom 2200mm	4
Davit Kit - Mast 1600mm / Boom 1000mm	5
Davit Kit - Mast 1600mm / Boom 1600mm	5
Davit Kit - Mast 1600mm / Boom 2200mm	6
Davit Kit - Mast 2200mm / Boom 1000mm	6
Davit Kit - Mast 2200mm / Boom 1600mm	6
Davit Kit - Mast 2200mm / Boom 2200mm	6
Davit Kit - Mast 2800mm / Boom 1000mm	7
Davit Kit - Mast 2800mm / Boom 1600mm	7
Davit Kit - Mast 2800mm / Boom 2200mm	7
Davit Booms	8
Davit Braces	8
Davit Masts	9
Davit Base - Fixed Floor Mount	10
Davit Base - Concealed Fixed Floor Mount	10
Davit Base - Removable Floor Mount Sleeve	10
Davit Cap	10
Davit Base - Fixed Wall Mount	11
Davit Base - Concealed Fixed Wall Mount	11
Davit Base - Removable Sleeve Wall Mount	11
Davit Sleeve	11
Davit Base - Floor Mounted Raised 400mm	12
Davit Base - Floor Mounted Raised 600mm	12
Davit Base - Floor Mounted Raised 800mm	12
Davit Base - Floor Mounted Raised 1000mm	12
Davit Shuttle	12
Davit Fixing - Cast-In Cage	15
Davit Fixing - Anchor Rod	15

FASTFIT DAVIT ANCHOR

DAVIT KIT - MAST 1000mm / BOOM 1000mm



- Davit Kit - Mast 1000mm with Boom 1000mm.
- Shuttle included with Boom.
- Base not included.
- Weight: 39.10kg

PRODUCT CODE: DAVIT_KIT10.10

Components	Description	Material	Qty
DAVIT_MAST10	1000mm Mast	Aluminium/Stainless Steel/Gal Steel	1
DAVIT_BOOM10	1000mm Boom	Aluminium/Stainless Steel/Gal Steel	1

DAVIT KIT - MAST 1000mm / BOOM 1600mm



- Davit Kit - Mast 1000mm with Boom 1600mm.
- Shuttle included with Boom.
- Base not included.
- Weight: 47.40kg

PRODUCT CODE: DAVIT_KIT10.16

Components	Description	Material	Qty
DAVIT_MAST10	1000mm Mast	Aluminium/Stainless Steel/Gal Steel	1
DAVIT_BOOM16	1600mm Boom	Aluminium/Stainless Steel/Gal Steel	1
DAVIT_BRACE10	1000mm Brace	Aluminium	1

DAVIT KIT - MAST 1000mm / BOOM 2200mm



- Davit Kit - Mast 1000mm with Boom 2200mm.
- Shuttle included with Boom.
- Base not included.
- Weight: 51.90kg

PRODUCT CODE: DAVIT_KIT10.22

Components	Description	Material	Qty
DAVIT_MAST10	1000mm Mast	Aluminium/Stainless Steel/Gal Steel	1
DAVIT_BOOM22	2200mm Boom	Aluminium/Stainless Steel/Gal Steel	1
DAVIT_BRACE10	1000mm Brace	Aluminium	1

FAST/FIT DAVIT TEMPORARY ANCHOR KITS

DAVIT KIT - MAST 1600mm / BOOM 1000mm



- Davit Kit - Mast 1600mm with Boom 1000mm.
- Shuttle included with Boom.
- Base not included.
- Weight: 40.60kg

PRODUCT CODE: DAVIT_KIT16.10

Components	Description	Material	Qty
DAVIT_MAST16	1600mm Mast	Aluminium/Stainless Steel/Gal Steel	1
DAVIT_BOOM10	1000mm Boom	Aluminium/Stainless Steel/Gal Steel	1

DAVIT KIT - MAST 1600mm / BOOM 1600mm



- Davit Kit - Mast 1600mm with Boom 1600mm.
- Shuttle included with Boom.
- Base not included.
- Weight: 51.90kg

PRODUCT CODE: DAVIT_KIT16.16

Components	Description	Material	Qty
DAVIT_MAST16	1600mm Mast	Aluminium/Stainless Steel/Gal Steel	1
DAVIT_BOOM16	1600mm Boom	Aluminium/Stainless Steel/Gal Steel	1
DAVIT_BRACE16	1600mm Brace	Aluminium	1

DAVIT KIT - MAST 1600mm / BOOM 2200mm



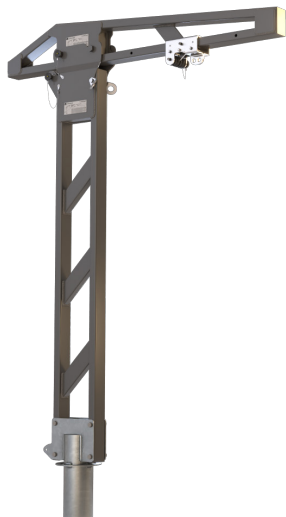
- Davit Kit - Mast 1600mm with Boom 2200mm.
- Shuttle included with Boom.
- Base not included.
- Weight: 56.40kg

PRODUCT CODE: DAVIT_KIT16.22

Components	Description	Material	Qty
DAVIT_MAST16	1600mm Mast	Aluminium/Stainless Steel/Gal Steel	1
DAVIT_BOOM22	2200mm Boom	Aluminium/Stainless Steel/Gal Steel	1
DAVIT_BRACE16	1600mm Brace	Aluminium	1

FAST/FIT DAVIT TEMPORARY ANCHOR KITS

DAVIT KIT - MAST 2200mm / BOOM 1000mm



- Davit Kit - Mast 2200mm with Boom 1000mm.
- Shuttle included with Boom.
- Base not included.
- Weight: 42.5kg

PRODUCT CODE: DAVIT_KIT22.10

Components	Description	Material	Qty
DAVIT_MAST22	2200mm Mast	Aluminium/Stainless Steel/Gal Steel	1
DAVIT_BOOM10	1000mm Boom	Aluminium/Stainless Steel/Gal Steel	1

DAVIT KIT - MAST 2200mm / BOOM 1600mm



- Davit Kit - Mast 2200mm with Boom 1600mm.
- Shuttle included with Boom.
- Base not included.
- Weight: 55kg

PRODUCT CODE: DAVIT_KIT22.16

Components	Description	Material	Qty
DAVIT_MAST22	2200mm Mast	Aluminium/Stainless Steel/Gal Steel	1
DAVIT_BOOM16	1600mm Boom	Aluminium/Stainless Steel/Gal Steel	1
DAVIT_BRACE22	2200mm Brace	Aluminium	1

DAVIT KIT - MAST 2200mm / BOOM 2200mm



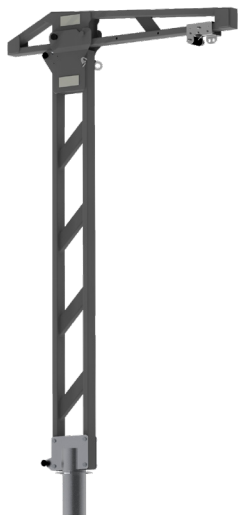
- Davit Kit - Mast 2200mm with Boom 2200mm.
- Shuttle included with Boom.
- Base not included.
- Weight: 59.5kg

PRODUCT CODE: DAVIT_KIT22.22

Components	Description	Material	Qty
DAVIT_MAST22	2200mm Mast	Aluminium/Stainless Steel/Gal Steel	1
DAVIT_BOOM22	2200mm Boom	Aluminium/Stainless Steel/Gal Steel	1
DAVIT_BRACE22	2200mm Brace	Aluminium	1

FAST/FIT DAVIT TEMPORARY ANCHOR KITS

DAVIT KIT - MAST 2800mm / BOOM 1000mm

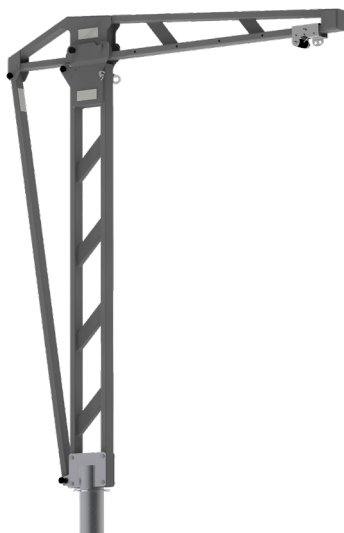


- Davit Kit - Mast 2800mm with Boom 1000mm.
- Shuttle included with Boom.
- Base not included.
- Weight: 46kg

PRODUCT CODE: DAVIT_KIT28.10

Components	Description	Material	Qty
DAVIT_MAST28	2800mm Mast	Aluminium/Stainless Steel/Gal Steel	1
DAVIT_BOOM10	1000mm Boom	Aluminium/Stainless Steel/Gal Steel	1

DAVIT KIT - MAST 2800mm / BOOM 1600mm



- Davit Kit - Mast 2800mm with Boom 1600mm.
- Shuttle included with Boom.
- Base not included.
- Weight: 60kg

PRODUCT CODE: DAVIT_KIT28.16

Components	Description	Material	Qty
DAVIT_MAST28	2800mm Mast	Aluminium/Stainless Steel/Gal Steel	1
DAVIT_BOOM16	1600mm Boom	Aluminium/Stainless Steel/Gal Steel	1
DAVIT_BRACE28	2800mm Brace	Aluminium	1

DAVIT KIT - MAST 2800mm / BOOM 2200mm



- Davit Kit - Mast 2800mm with Boom 2200mm.
- Shuttle included with Boom.
- Base not included.
- Weight: 64.6kg

PRODUCT CODE: DAVIT_KIT28.22

Components	Description	Material	Qty
DAVIT_MAST28	2800mm Mast	Aluminium/Stainless Steel/Gal Steel	1
DAVIT_BOOM22	2200mm Boom	Aluminium/Stainless Steel/Gal Steel	1
DAVIT_BRACE28	2800mm Brace	Aluminium	1

FAST/FIT DAVIT TEMPORARY ANCHOR PARTS

DAVIT BOOM - 1000mm



- Davit boom 1000mm. Supplied with moveable Shuttle.

PRODUCT CODE: DAVIT_BOOM10		Weight:	12.5kg
Components	Description	Material	Qty
DAVIT_BOOM.LABEL	Davit Boom Label	Adhesive Traffolyte	1
DAVIT_SHUTTLE	Davit Boom Shuttle	Stainless Steel	1
DAVIT_BOOM10_WELD	1000mm Boom Weldment	Aluminium	1

DAVIT BOOM - 1600mm



- Davit boom 1600mm. Supplied with moveable Shuttle.

PRODUCT CODE: DAVIT_BOOM16		Weight:	20.8kg
Components	Description	Material	Qty
DAVIT_BOOM.LABEL	Davit Boom Label	Adhesive Traffolyte	1
DAVIT_SHUTTLE	Davit Boom Shuttle	Stainless Steel	1
DAVIT_BOOM16_WELD	1600mm Boom Weldment	Aluminium	1

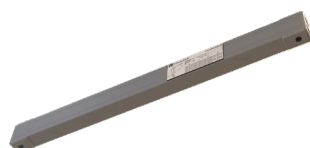
DAVIT BOOM - 2200mm



- Davit boom 2200mm. Supplied with Shuttle.

PRODUCT CODE: DAVIT_BOOM22		Weight:	25.3kg
Components	Description	Material	Qty
DAVIT_BOOM.LABEL	Davit Boom Label	Adhesive Traffolyte	1
DAVIT_SHUTTLE	Davit Boom Shuttle	Stainless Steel	1
DAVIT_BOOM22_WELD	2200mm Boom Weldment	Aluminium	1

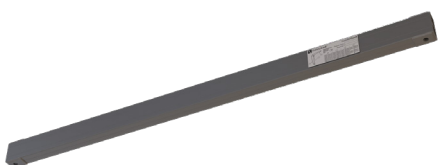
DAVIT BRACE - 1000mm



- Davit rear brace for 1000mm Mast. Required only for Booms over 1000mm.

PRODUCT CODE: DAVIT_BRACE10		Weight:	1.8kg
Components	Description	Material	Qty
DAVIT_BRACE10	Brace: 1000mm	Aluminium	1
DAVIT_BOOM.LABEL	Davit Boom Label	Adhesive Traffolyte	1

DAVIT BRACE - 1600mm



- Davit rear brace for 1600mm Mast. Required only for Booms over 1000mm.

PRODUCT CODE: DAVIT_BRACE16		Weight:	3kg
Components	Description	Material	Qty
DAVIT_BRACE16	Brace: 1600mm	Aluminium	1
DAVIT_BOOM.LABEL	Davit Boom Label	Adhesive Traffolyte	1

DAVIT BRACE - 2200mm



- Davit rear brace for 2200mm Mast. Required only for Booms over 1000mm.

PRODUCT CODE: DAVIT_BRACE22		Weight:	4.2kg
Components	Description	Material	Qty
DAVIT_BRACE22	Brace: 2200mm	Aluminium	1
DAVIT_BOOM.LABEL	Davit Boom Label	Adhesive Traffolyte	1

FAST/FIT DAVIT TEMPORARY ANCHOR PARTS

DAVIT BRACE - 2800mm



- Davit rear brace for 2800mm Mast. Required only for Booms over 1000mm.

PRODUCT CODE: DAVIT_BRACE28

Weight: 4.2kg

Components	Description	Material	Qty
DAVIT_BRACE28	Brace: 2800mm	Aluminium	1
DAVIT_BOOM.LABEL	Davit Boom Label	Adhesive Traffolyte	1

DAVIT MAST - 1000mm



- Davit mast 1000mm.
- Secondary anchor point included.

PRODUCT CODE: DAVIT_MAST10

Weight: 26.6kg

Components	Description	Material	Qty
DAVIT_MAST10	1000mm Mast	Aluminium/Stainless Steel/Gal Steel	1
DAVIT_BOOM.LABEL	Davit Boom Label	Adhesive Traffolyte	1

DAVIT MAST - 1600mm



- Davit mast 1600mm.
- Secondary anchor point included.

PRODUCT CODE: DAVIT_MAST16

Weight: 28.1kg

Components	Description	Material	Qty
DAVIT_MAST16	1600mm Mast	Aluminium/Stainless Steel/Gal Steel	1
DAVIT_BOOM.LABEL	Davit Boom Label	Adhesive Traffolyte	1

DAVIT MAST - 2200mm



- Davit mast 2200mm.
- Secondary anchor point included.

PRODUCT CODE: DAVIT_MAST22

Weight: 30kg

Components	Description	Material	Qty
DAVIT_MAST22	2200mm Mast	Aluminium/Stainless Steel/Gal Steel	1
DAVIT_BOOM.LABEL	Davit Boom Label	Adhesive Traffolyte	1

DAVIT MAST - 2800mm



- Davit mast 2800mm.
- Secondary anchor point included.

PRODUCT CODE: DAVIT_MAST28

Weight: 33.5kg

Components	Description	Material	Qty
DAVIT_MAST28	2800mm Mast	Aluminium/Stainless Steel/Gal Steel	1
DAVIT_BOOM.LABEL	Davit Boom Label	Adhesive Traffolyte	1

FAST/FIT DAVIT ANCHOR BASES/FIXINGS

DAVIT BASE - FIXED FLOOR MOUNT



- Davit Base to be secured with Anchor Rods, Cast-In Cage or Steel Fixings.

PRODUCT CODE: DAVIT_BASE01		Weight:	24.5kg
Components	Description	Material	Qty
DAVIT_BASE01_WELD	Davit Floor Mount Base Weldment	Galvanised Steel	1
DAVIT_BASE.SLEEVE	Davit Base Sleeve	PVC	1
DAVIT_BASE.LABEL	Davit Base Label	Adhesive Traffolyte	1

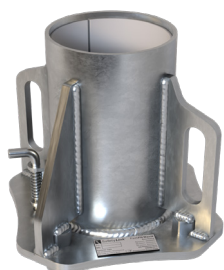
DAVIT BASE - CONCEALED FIXED FLOOR MOUNT



- Davit Base to be secured with Anchor Rods, Cast-In Cage or Steel Fixings.
- Use with removable sleeve - DAVIT_BASE02.02.
- One (1) base required for each abseil location.

PRODUCT CODE: DAVIT_BASE02.01		Weight:	15.7kg
Components	Description	Material	Qty
DAVIT_BASE02.01_WELD	Davit Fixed Base Weldment	Galvanised Steel	1
DAVIT_BASE.LABEL	Davit Base Label	Adhesive Traffolyte	1

DAVIT BASE - REMOVABLE SLEEVE FLOOR MOUNT

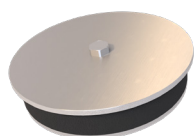


- Davit removable floor mount base sleeve.
- Use with fixed base - DAVIT_BASE02.01.
- One (1) base required for each davit arm.

PRODUCT CODE: DAVIT_BASE02.02		Weight:	16.3kg
Components	Description	Material	Qty
DAVIT_BASE02.027	Davit Removable Base Sleeve Roll Pin	Galvanised Steel	1
DAVIT_BASE02.026	Davit Removable Base Sleeve Spring	Galvanised Steel	1
DAVIT_BASE02.025	Davit Removable Base Sleeve Locking Pin	Galvanised Steel	1
DAVIT_BASE02.02_WELD	Davit Removable Base Sleeve Weldment	Galvanised Steel	1
DAVIT_BASE.SLEEVE	Davit Base Sleeve	PVC	1
DAVIT_BASE.LABEL	Davit Base Label	Adhesive Traffolyte	1

DAVIT CAP

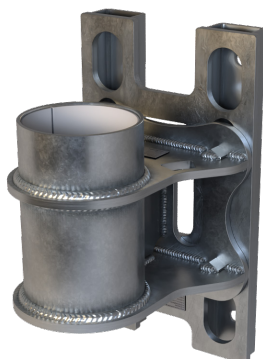
- Davit cap is used to cap off sleeve on davit base when not in use.



PRODUCT CODE: DAVIT_BASE.CAP		Weight:	1.66kg
Components	Description	Material	Qty
BOLT-M10X40MM-SS	Bolt, Hex, M10X40 SS316	316 Stainless Steel	1
DAVIT_BASE.CAP.03	Bottom Plate, Base Cap, Davits	316 Stainless Steel	1
DAVIT_BASE.CAP.02	EPDM Sponge Foam, Base Cap, Davits	EPDM	1
DAVIT_BASE.CAP.01	Top Plate, Base Cap, Davits	316 Stainless Steel	1

FAST/FIT DAVIT ANCHOR BASES/FIXINGS

DAVIT BASE - FIXED WALL MOUNT



- Davit Base to be secured to wall with Anchor Rods or Steel Fixings.
- Standard Concrete Install: suitable for DAVIT_BOOM10 and DAVIT_BOOM16.
- Standard Steel Install: suitable for DAVIT_BOOM10, DAVIT_BOOM16 and DAVIT_BOOM22.

PRODUCT CODE: DAVIT_BASE04

Weight: 34.7kg

Components	Description	Material	Qty
DAVIT_BASE04.01	Davit Wall Mount Fixed Base	Galvanised Steel	1
DAVIT_BASE04.02	Davit Wall Mount Sleeve	PVC	1

DAVIT BASE - CONCEALED FIXED WALL MOUNT



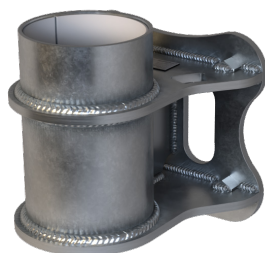
- Davit Base to be secured to wall with Anchor Rods or Steel Fixings, use with removable sleeve - DAVIT_BASE04.02.
- One (1) base required for each abseil location.
- Standard Concrete Install: suitable for DAVIT_BOOM10 and DAVIT_BOOM16.
- Standard Steel Install: suitable for DAVIT_BOOM10, DAVIT_BOOM16 and DAVIT_BOOM22.

PRODUCT CODE: DAVIT_BASE04.01

Weight: 13.7kg

Components	Description	Material	Qty
DAVIT_BASE04.01_WELD	Davit Wall Mount Fixed Base Weldment	Galvanised Steel	1
DAVIT_BASE.LABEL	Davit Base Label	Adhesive Traffolyte	1

DAVIT BASE - REMOVABLE SLEEVE WALL MOUNTED



- Davit removable wall mount base sleeve.
- Use with fixed base - DAVIT_BASE04.01.
- One (1) base required for each davit arm.
- Standard Concrete Install: suitable for DAVIT_BOOM10 and DAVIT_BOOM16.
- Standard Steel Install: suitable for DAVIT_BOOM10, DAVIT_BOOM16 and DAVIT_BOOM22.

PRODUCT CODE: DAVIT_BASE04.02

Weight: 21.04kg

Components	Description	Material	Qty
DAVIT_BASE04.02_WELD	Davit Removable Base Sleeve Weldment	Galvanised Steel	1
DAVIT_BASE02.025	Davit Removable Base Sleeve Locking Pin	Galvanised Steel	1
DAVIT_BASE.SLEEVE	Davit Base Sleeve	PVC	1
DAVIT_BASE.LABEL	Davit Base Label	Adhesive Traffolyte	1

DAVIT SLEEVE



- Davit sleeve, used inside davit bases.

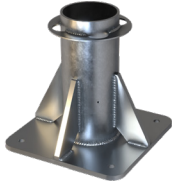
PRODUCT CODE: DAVIT_BASE.SLEEVE

Weight: 0.5kg

Components	Description	Material	Qty
DAVIT_BASE.SLEEVE	Davit Base Sleeve	PVC	1

FAST/FIT DAVIT ANCHOR BASES/FIXINGS

DAVIT BASE - FLOOR MOUNTED RAISED 400MM



- Raised floor mounted base kit: 400mm.
- Davit Base to be secured with Anchor Rods or Cast-In Cage.

PRODUCT CODE: DAVIT_BASE07.400			Weight:	41.2kg
Components	Description	Material	Qty	
DAVIT_BASE07.400_WELD	Davit Floor Mount Base Weldment 400mm	316SS	1	
DAVIT_BASE.SLEEVE.02	Davit Raised Floor Mount Base Sleeve	PVC	1	
DAVIT_BASE.CAP	Davit Base Cap	316SS	2	

DAVIT BASE - FLOOR MOUNTED RAISED 600MM



- Raised floor mounted base kit: 600mm.
- Davit Base to be secured with Anchor Rods or Cast-In Cage.

PRODUCT CODE: DAVIT_BASE07.600			Weight:	46.7kg
Components	Description	Material	Qty	
DAVIT_BASE07.600_WELD	Davit Floor Mount Base Weldment 600mm	316SS	1	
DAVIT_BASE.SLEEVE.02	Davit Raised Floor Mount Base Sleeve	PVC	1	
DAVIT_BASE.CAP	Davit Base Cap	316SS	2	

DAVIT BASE - FLOOR MOUNTED RAISED 800MM



- Raised floor mounted base kit: 800mm.
- Davit Base to be secured with Anchor Rods or Cast-In Cage.

PRODUCT CODE: DAVIT_BASE07.800			Weight:	52.3kg
Components	Description	Material	Qty	
DAVIT_BASE07.800_WELD	Davit Floor Mount Base Weldment 800mm	316SS	1	
DAVIT_BASE.SLEEVE.02	Davit Raised Floor Mount Base Sleeve	PVC	1	
DAVIT_BASE.CAP	Davit Base Cap	316SS	2	

DAVIT BASE - FLOOR MOUNTED RAISED 1000MM



- Raise floor mounted base kit: 1000mm.
- Davit Base to be secured with Anchor Rods or Cast-In Cage.

PRODUCT CODE: DAVIT_BASE07.1000			Weight:	57.8kg
Components	Description	Material	Qty	
DAVIT_BASE07.1000_WELD	Davit Floor Mount Base Weldment 1000mm	316SS	1	
DAVIT_BASE.SLEEVE.02	Davit Raised Floor Mount Base Sleeve	PVC	1	
DAVIT_BASE.CAP	Davit Base Cap	316SS	2	

DAVIT SHUTTLE

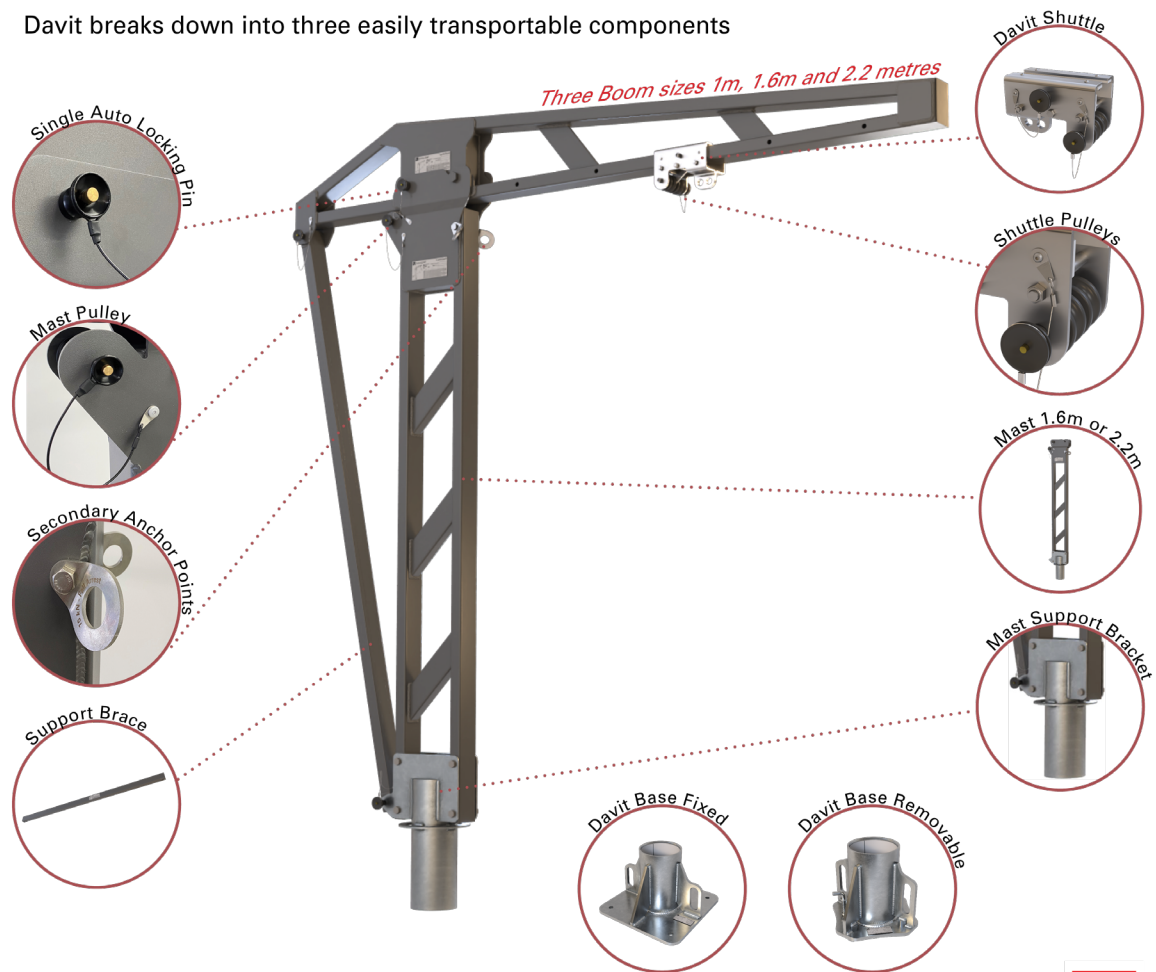


- Davit moveable shuttle.
- Weight: 2.95kg

PRODUCT CODE: DAVIT_SHUTTLE			Weight:	2.95kg
Components	Description	Material	Qty	
DAVIT_SHUTTLE	Davit Shuttle	Stainless Steel	1	

FastFit DAVIT

Davit breaks down into three easily transportable components



SafetyLink.com



1 Warning

Improper Use, Installation or Maintenance may result in serious injury or death.

The structure/anchorage should be assessed by an engineer to ensure adequate strength is met for the FastFit Davit systems.

SafetyLink's Height Safety Systems must only be installed as per our installation guides, to structures as specified in the installation manual for each product.

All safety procedures must be complied with in accordance with the current safety code(s) of practice(s) for working at heights in your region. Ensure safety at all times by being attached to suitable anchor points and approved safety equipment or approved scaffolding.

Installation is to be carried out by, or under the supervision of, a competent person.

A personal energy absorber or a fall-arrest device with a personal energy absorber must be used in conjunction with all SafetyLink Anchorages and Lifeline systems.

Do not carry out any modifications on this system without written permission by SafetyLink Pty Ltd.

2 Specification

2.1 Description

The SafetyLink FastFit Davit is a Temporary anchor suitable for use as part of a personal fall protection system. The FastFit Davit is suitable for having one user suspended from the shuttle and a second user connected to either of the secondary attachment points (Mast or Base).

Only one user shall be suspended from the Davit's shuttle or secondary attachment points at a time. Please read manual carefully before use.

2.2 Standard

The FastFit Davit Temporary anchor System is compliant with AS/NZS 5532, EN795.

2.3 User Rating

The FastFit Davit is rated for one user with a maximum weight of 150kg suspended from the shuttle and one user connected to either of the secondary attachment points with a maximum weight of 150kg.

5.7 Materials Handling

The Davit may be used to lift materials. Davits used for material lifting purposes shall not be used for supporting a user. Refer to manufacturer's instructions.

FAST/FIT DAVIT ANCHOR BASES/FIXINGS

EXTRACT FROM MANUAL - INSTALLATION

4.1 Fixings

4.1.1 General

All fixings used to attach the FastFit Davit system to the substrate that were not supplied by SafetyLink shall be M16 (5/8") in diameter. Fixings shall be stainless steel grade 316 or 304 or hot dip galvanised or zinc plated steel grades 8.8 or 8. Fixings shall be installed with spring washers, lock nuts or thread lock adhesive to prevent loosening.

⚠ SafetyLink does not recommend the use of zinc plated fasteners in a corrosive or outdoor environment.

4.1.2 Steel

For installation on a steel structure, SafetyLink recommends the use of appropriate hex head screws or bolts meeting the requirements of section 4.1.1. Fixings shall be tightened to 70Nm and once tight, a minimum of 2 threads shall extend past the end of the nut.

4.1.3 Concrete 3rd Party

In addition to the part numbers specified in Section 4.1.4, SafetyLink recommends the use of the following chemical and mechanical fixings for installation of the FastFit Davit Temporary anchor into concrete. Refer to the manufacturer's instruction for proper preparation, installation and edge distance.

⚠ All fixings shall meet the load requirements specified in Section 4.1.1. Consult the manufacturer to assess the suitability of the below product.

- a. Fischer FISH.300 (chemical)
- b. Hilti RE 200 (chemical)
- c. Hilti RE 500 (chemical)
- d. Fischer FAZ II (mechanical)
- e. Hilti HST3 (mechanical)

⚠ All chemical and mechanical fixing shall be proof loaded after installation as per AS/NZS 1891.4 or the appropriate local regulation. See Section 4.2.

4.1.4 Concrete - DonutLink

SafetyLink's DonutLink M16 Concrete Stud CON-16X200-DONUT is to be installed with chemical adhesive CON-CHEM-FISV.300.

⚠ Ensure the specific requirements are met for the base being installed.

1. Mark the location for the hole and drill an Ø18mm hole to the required depth for the base.
2. Clean the hole, ensuring it is free of moisture and dust and inject the adhesive into the hole as per the manufacturer's instruction.
3. Insert the stud to full depth, a minimum of 45mm of the stud should remain above the surface. Wipe away any adhesive chemical expelled from the hole.

⚠ Ensure enough adhesive was used, the adhesive should finish flush with the concrete.

4. Once the adhesive is cured, install the spring washer and tighten the Donut to 70Nm. The top of the stud may be cut down to leave a minimum of 2 threads exposed.

The DonutLink can be proof loaded with the Pull Test Adaptor (DONUTLINK-ADP) and a Hydrajaws portable tension tester.

Davit - Installation



SCAN ME

FAST/FIT DAVIT ANCHOR BASES/FIXINGS

DAVIT FIXING - CAST IN CONCRETE (Mild Steel)



- Concrete Cast-In Cage for installation prior to pouring concrete.
- Galvanised Anchor Studs.

PRODUCT CODE: DAVIT_BASE05			Weight:	2.14kg
Components	Description	Material	Qty	
DAVIT_BASE05.01	Stud, Cast In Cage, Davits	Mild Steel	4	
DAVIT_BASE05.02	Casting Jig, Cast In Cage, Davits	Mild Steel	2	
CON-CAST.02	12mm Reo Bar 6m, Length 595mm	Mild Steel	2	
WASHER M16_Spring_Gal	Spring Washer: M16 Gal	Mild Steel	4	
WASHER M16-8.8	Washer: M16 Structural HDG	Mild Steel	4	
NUT M16-8.8	Nut: M16 Structural HDG	Mild Steel	8	

DAVIT FIXING - CAST IN CONCRETE (316 Stainless Steel)



- Concrete Cast-In Cage for installation prior to pouring concrete.
- 316 Stainless Steel Anchor Studs.

PRODUCT CODE: DAVIT_BASE05-SS			Weight:	4.07kg
Components	Description	Material	Qty	
DAVIT_BASE05-SS.01	Stud, Cast In Cage, Davits	316SS	4	
DAVIT_BASE05.02	Casting Jig, Cast In Cage, Davits	316SS	2	
CON-CAST.02	12mm Reo Bar 6m, Length 595mm	316SS	2	
WASHER M16_Spring_316	Spring Washer: M16	316SS	4	
WASHER M16_316SS	Washer: M16	316SS	4	
NUT M16_316SS	Nut: M16	316SS	8	

DAVIT FIXING - RETRO CONCRETE



- Concrete Anchor Rod for fixing Davit to concrete structures.

PRODUCT CODE: CON-M16X200-DONUT			Weight:	0.27kg
Components	Description	Material	Qty	
ROD-M16x200mm	Anchor Rod M16X200 (45 degree cut)	316SS	1	
NUT M16_316	M16 Nut	316SS	1	
WASHER M16_Spring_316	M16 Spring Washer	316SS	1	
WASHER M16_DONUT	M16 Donut Washer	316SS	1	
WASHER M16 NYLON	M16 Nylon Washer (Black)	Nylon	1	

DAVIT FIXING - RETRO CONCRETE (REMOVABLE)





- Concrete Anchor Insert for fixing Davit to concrete structures.

PRODUCT CODE: CONCL013			Weight:	0.57kg
Components	Description	Material	Qty	
BOLT-M16x50mm-SS	Bolt: M16x50mm Set Screw	316SS	1	
CON-INSERT-125	ConcreteLink Insert: M16 ID x 125mm	316SS	1	
WASHER M16_DONUT	Washer: M16 DonutLink	316SS	1	
WASHER M16_SHOULDER_NYLON	Washer: M16 Shoulder	Nylon	1	
CONCL006	Brass Bolt for Concrete Insert	Brass	1	
WASHER M16_Spring_316	Washer: M16 Spring	316SS	1	
WASHER M16 NYLON	M16 Nylon Washer (Black)	Nylon	1	

APPENDIX 1 - CHEMICAL ADHESIVE

PRODUCT CODE: CON-CHEM-FISV.300

Components	Description	Qty	
CON-CHEM-FISV.300.01	Injection Mortar FIS V Cartridge 300ml	1	
CON-CHEM-FISMR	Static Mixer FIS MR	2	

FIS V 300T: INJECTION MORTAR

APPLICATION	ANCHOR DIAMETER(mm)	DRILL HOLE DIAMETER(mm)	DRILL HOLE DEPTH(mm)	MORTAR/ FIXING(ml)	NO# OF FIXING/ CARTRIDGE
Concrete Insert	24	28	90	40	6
One Piece Eyebolt	16	18	90	15	18
WindowLink	53&25	55&28	20&122	60	4
SwiveLink	24	28	90	40	6
M10x130 Rod – Guardrail	10	12	95	8	35
M12x160 Rod – Tuff Post	12	14	115	10	28
M12x160 Rod – X-Rail	12	14	95	10	28
M16x130 Rod – DonutLink FrogLine	16	18	95	15	18
M16x160 Rod – Tuff Post	16	18	115	15	18
M16x200 Rod – Davit	16	18	140	16	15

CURING TIME FIS V

Cartridge Temperature (mortar)	Gelling Time	Temperature at anchoring base	Curing Time
		- 5 C - ± 0 C	24 hours
+ 0 C - + 5 C	13 minutes	± 0 C - + 5 C	3 hours
+ 5 C - + 10 C	9 minutes	+ 5 C - + 10 C	90 minutes
+ 10 C - + 20 C	5 minutes	+ 10 C - + 20 C	60 minutes
+ 20 C - + 30 C	4 minutes	+ 20 C - + 30 C	45 minutes
+ 30 C - + 40 C	2 minutes	+ 30 C - + 40 C	35 minutes

The above times apply from the moment of contact between resin and hardener in the static mixer.

For installation, the cartridge temperature must be at least +5 C. For longer installation times, ie when interruptions occur in work, the mixer should be replaced.

TESTING FOR CONCRETE MOUNTED ANCHOR

To comply with current Standards each Concrete unit must be tested after installation. Allow required curing time as specified in above table before testing. Test consists of pull out force to 50% of design load of anchorage. Note: Drilled-in anchorages such as friction and glued-in anchorages shall be placed so that the shear load is at least twice the tension load. For collared eyebolts this translates to a pull at an angle not exceeding 20 degrees to the surface in which the bolt is installed.

Training

Steps to becoming a qualified SafetyLink product installer

1 Accreditation

Each user must have their Working at Heights accreditation (RIIWH5204D).

The requirements for installation of any fall protection equipment is to be a competent person. The definition of this is someone with suitable skills, knowledge, experience and training in the height safety industry. In order for you to work at heights you must complete a working at heights accreditation. Contact your local training centre.

2 Insurance

Each user/business entity must have correct insurance for installing height safety equipment.

Certification and annual recertification may have an effect on your Public and Products Liability Insurance. Engaging in these activities may also require you to take out or amend your existing Professional Indemnity Insurance. Because policies vary between insurers it is best you speak to your insurance advisor to ensure your coverage will include these activities.

3 Product Training

Each user must complete and pass each course for the product they are purchasing/installing.

SafetyLink's online training portal (Safety Centre) provides online courses on SafetyLink Anchors. Register yourself for free on SafetyLink's website www.safetylink.com/safetycentre. After completing and passing the product course you will receive a certificate to download and provide to your customer. Certificates are valid for 2 years. Personal training is required for installing lifelines, contact SafetyLink.

4 Certification

Issue a certificate for height safety system certification upon completion of the project.

On completion supply certification documents with site layout plan, training certificates, product checklist and manuals to the end user. You should also discuss the wording of any proposed certification with your relevant insurer and legal adviser to ensure you are covered in the event of a claim.

Scan QR Code to register online for training



SafetyLink Pty Ltd 1300 789 545
+61 2 4964 1068 info@safetylink.com

Contact SafetyLink for your closest distributor.

www.safetylink.com

INNOVATIVE FALL PROTECTION

Asia-Pacific/The Americas
info@safetylink.com
1300 789 545 | +61 (0)2 4964 1068

Europe/Africa/Middle East
europe.sales@safetylink.com

Northern Europe
uk.sales@safetylink.com

www.safetylink.com



SafetyLink®

A DIVISION OF



DELTAPLUS



FS 707792